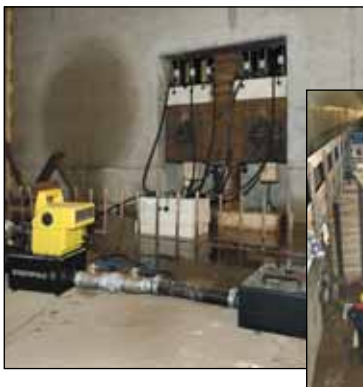


▼ Shown from left to right: RAC-5010, RAC-15010, RAC-304, RAC-208



- Composite bearings prevent metal-to-metal contact, increasing cylinder life and resistance to side-loads of up to 10%
- Hard-Coat finish on all surfaces resists damage and extends cylinder life
- Handles standard on all models
- Steel base plate and saddle for protection against load-induced damage
- Integral stop ring prevents plunger over-travel and is capable of withstanding the full cylinder capacity
- High strength return spring for rapid cylinder retraction
- CR-400 coupler and dustcap included on all models
- All cylinders meet ASME B-30.1 and ISO 10100 standards.



◀ The unique Enerpac RA-Series jacks – lightweight and entirely made of aluminium alloy – these RAC-506 jacks are ideal for the submergence and positioning procedure of tunnel elements at the bottom of the the rivers in the High Speed Train Line (HSL) project in Holland.

Lightweight for Maximum Portability



Saddles

All RAC-cylinders are equipped with bolt-on removable hardened steel saddles. For Tilt Saddles see

next page.

Page: 15



Lightweight Hand Pumps

The Enerpac composite lightweight hand pumps P-392 or P-802 make the optimal lightweight set.

Page: 68



Lock Nut Cylinders

When positive mechanical load holding is required, RACL-Series Aluminium Lock Nut Cylinders are the

ideal choice.

Page: 16

▼ SELECTION CHART

Cylinder Capacity @ 700 bar ton (kN)	Stroke (mm)	Model Number *	Cylinder Effective Area (cm ²)
20 (218)	50	RAC-202	31,2
	100	RAC-204	31,2
	150	RAC-206	31,2
30 (309)	50	RAC-302	44,2
	100	RAC-304	44,2
	150	RAC-306	44,2
50 (496)	50	RAC-502	70,9
	100	RAC-504	70,9
	150	RAC-506	70,9
100 (1002)	100	RAC-1004	143,1
	150	RAC-1006	143,1
	200	RAC-1008	143,1
150 (1589)	150	RAC-1506	227,0

* Note: Every RAC-cylinder is available with a stroke of 50, 100, 150, 200 and 250 mm.

Single-Acting, Aluminium Cylinders

Optional Bolt On Tilt Saddle Dimensions (mm)				
For Cylinder Model / Capacity ton	Tilt Saddle Model Number	Tilt Saddle Diameter J1	Saddle Protrusion from Plunger K1	
RAC-50	CATG-50	50	24	
RAC-100	CATG-150	91	31	
RAC-150	CATG-200	118	35	

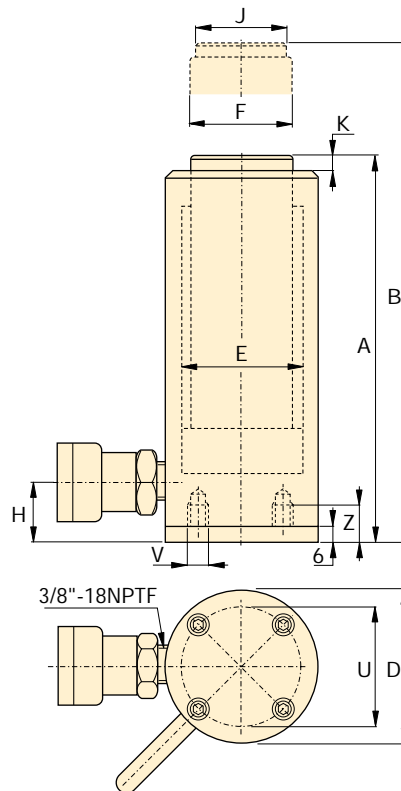


Steel Base Plate Mounting Holes

The mounting holes in these aluminium cylinders are designed for fixturing the steel base plate. They will not withstand the capacity of the cylinder. The steel base plate protects the cylinder from damage and should not be removed.

Steel Base Plate Mounting Holes			
Cylinder Model / Capacity ton	Bolt Circle U (mm)	Thread V (mm)	Thread Depth ¹⁾ Z (mm)
RAC-20	70,0	M6	12
RAC-30	80,0	M6	12
RAC-50	110,0	M6	12
RAC-100	160,0	M6	12
RAC-150	200,0	M6	12

¹⁾ Including Base Plate Height of 6 mm.



RAC Series



Capacity:
20-150 ton

Stroke:
50 - 250 mm

Maximum Operating Pressure:
700 bar



High Temperature and Corrosion Resistant Products

Some cylinders, hand pumps and valves are available with Viton seals and nickel plating for use in extreme environments.

Page: 62



Hoses

Enerpac offers a complete line of high quality hydraulic hoses. To ensure the integrity of your system, specify only Enerpac hydraulic hoses.

Page: 124

Oil Capacity (cm ³)	Collapsed Height A (mm)	Extended Height B (mm)	Outside Diameter D (mm)	Cylinder Bore Diameter E (mm)	Plunger Diameter F (mm)	Bottom to Advance Port H (mm)	Saddle Diameter J (mm)	Saddle Protrusion from Plunger K (mm)	Weight (kg)	Model Number *
156	174	224	85	63,0	50,0	27	40	3	3,6	RAC-202
312	224	324	85	63,0	50,0	27	40	3	4,1	RAC-204
468	274	424	85	63,0	50,0	27	40	3	4,6	RAC-206
221	181	231	100	75,0	60,0	32	40	3	4,5	RAC-302
442	231	331	100	75,0	60,0	32	40	3	5,2	RAC-304
663	281	431	100	75,0	60,0	32	40	3	5,9	RAC-306
354	186	236	130	95,0	80,0	30	50	3	8,5	RAC-502
709	236	336	130	95,0	80,0	30	50	3	9,8	RAC-504
1063	286	436	130	95,0	80,0	30	50	3	11,1	RAC-506
1431	271	271	180	135,0	110,0	46	94	3	19,6	RAC-1004
2147	321	471	180	135,0	110,0	46	94	3	21,9	RAC-1006
2863	371	571	180	135,0	110,0	46	94	3	24,2	RAC-1008
3405	343	493	230	170,0	140,0	51	113	3	33,3	RAC-1506